

# SOLUTIONS FOR CONTROL ROOMS

## PERFECT VISUAL SOLUTIONS



# PERFECT SOLUTIONS FOR RELIABLE SECURITY INNOVATIONS “MADE IN GERMANY”.



eyevis is one of the leading suppliers of video wall systems that are used for security, information, communication, simulation and virtual reality worldwide. Our visualisation systems are consistently geared towards the specific requirements of the most diverse fields of application. Based in the traditionally innovative south of Germany, for more than 15 years we have been designing and producing integrated solutions which incorporate not only the display hardware and the controllers for managing video walls or individual monitors but also the software. Systems by eyevis are characterised by their flexibility, their high degree of customisation and the highest image quality whilst reliably supporting 24/7 operations.

Regardless of whether control rooms in power plants, traffic control centres, monitoring systems or prestigious applications are concerned – wherever perfect presentation and reliable continuous function are required, eyevis is an internationally sought-after solution provider. Along with the consistent use of the most current technologies and the best system components available on the market, our extensive experience, our technological leadership, our innovative spirit and our passion for every-thing we do are the factors of success that have made us special and valued by customers from all over the world.

It is our ambition to not only satisfy the high requirements placed upon reliable video wall systems but to be ahead of them and to define the currently accepted industry standards ourselves. We therefore continue to invest in research and development. The knowledge surplus resulting from this investment consistently leads to new ideas and improvements which we strive to introduce into our products and which increase the performance of our systems.

eyevis views itself as a partner and source of inspiration to its customers. Through discussion we develop solutions which are technically and economically persuasive. Our international network of subsidiaries, dealers and service partners helps us to combine the qualifications and motivation of all employees in order to perfectly conform with the requirements of our customers all over the world. Our expertise is passionately encapsulated into every single eyevis video wall system – from consultancy to development through to production and service.

# PRODUCTS AND SOLUTIONS FOR

TRAFFIC, TRANSPORT  
AND AEROSPACE



ENERGY, WATER  
AND PUBLIC UTILITY  
COMPANIES



EMERGENCY SERVICES,  
SECURITY AND  
ARMED FORCES



TELECOMMUNICATIONS  
AND DATA PROCESSING  
CENTRES



INDUSTRY AND  
PROCESS CONTROL





# OPERATING WORLDWIDE MISSION CUSTOMERS WHO PUT THEIR TRUST IN EYEVIS TECHNOLOGY.



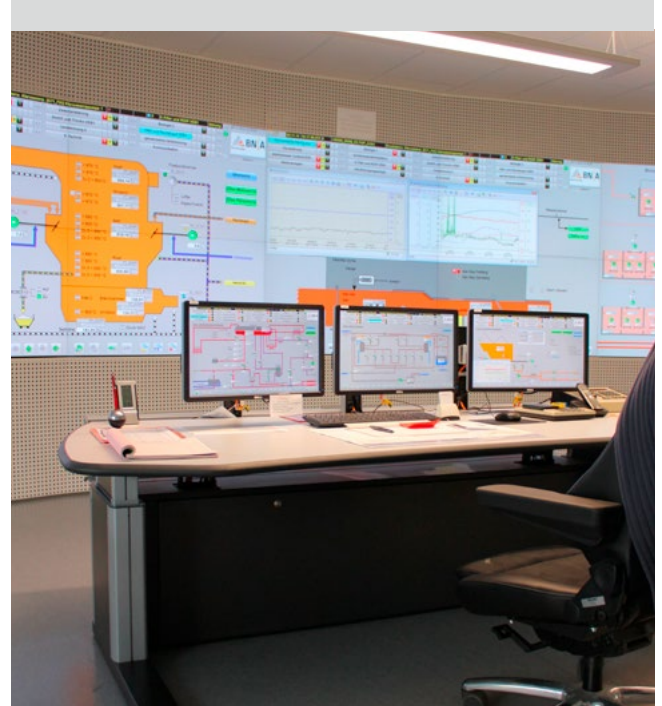
## GLASGOW OPERATIONS CENTRE

Glasgow Operations Centre is a state-of-the-art integrated traffic and public safety management system. The new centre brings together Public Space CCTV, security for the city council's museums and art galleries, Traffic Management and Police Intelligence. The facility has the capability to provide a co-ordinated, real-time, intelligence-led, response to incidents large and small across the city, placing Glasgow at the leading edge of smart city management.

On eighty-five 55-inch displays camera signals from Community Safety Glasgow and Traffic Control & Management Glasgow can be monitored and controlled. The real muscle of the operation is handled in the server room, where eleven netPIX controllers, incorporating 65 daisy chained IPD32 decoders sit in racks. Each one is capable of managing 32 IP streams, which gives the GOC the ability to handle up to almost 2,100 different feeds at once.

### Equipment used:

- 85× 55-inch Video Wall LCD (EYE-LCD-5500-M-USN-LD)
- 11× netPIX Video Wall Controller with IP Decoder Boards
- 1× eyeCON Basic Wall Management Software



## SEWAGE TREATMENT PLANT KARLSRUHE

BN Automation AG modernized the entire automation and process control engineering of the sewage treatment plant Karlsruhe as a large-scale project. In the course of this modernization, also the control room was renovated and the already existing mosaic-type control panel was replaced by a video wall consisting of 18 eyevis 60-inch LED rear projection cubes type EC-60-LHD. In order to visualize the whole waste water system and the processes in two sludge incinerators, the video wall is in operation 24/7. The applied wall management software eyeCON as well as the netPIX graphics controller by eyevis allow a flexible feed of the process data and the signals of the surveillance cameras.

### Equipment used:

- 18× 60-inch LED-lit DLP® Cubes (EC-60-LHD)
- 2× netPIX Video Wall Controller
- 1× eyeCON Basic Wall Management Software
- 1× ECS Data Base Server

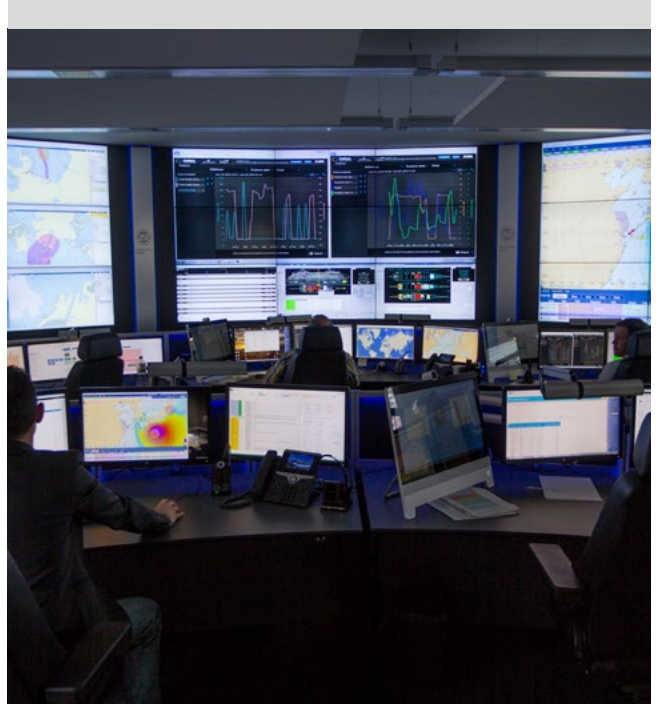


## CONTROL ROOM FOR STATOIL PROCESSING PLANT IN KÅRSTØ

A total number of forty-two 60-inch eyevis rear-projection cubes visualise the processes in one of Europe's largest facilities for transport and treatment of gas and condensate (light oil). At the plant, the pipelines of several natural gas fields in the North Atlantic converge. The processing plant of the oil and gas company Statoil in Kårstø plays a central role for the transportation and processing of natural gas and condensates that are produced at the Norwegian continental shelf. The gas is processed and purified at the plant and is then passed on to different recipients all over Europe. For the central process management, the pipelines, the gas transportation as well as the process data of the processing on site are visualized on the eyevis cubes. Additionally, the control room technicians monitor the plant safety.

### Equipment used:

- 42× 60-inch LED-lit DLP® Cubes (EC-60-LHD)
- 5× netPIX Video Wall Controller
- 1× eyeCON Basic Wall Management Software



## CARNIVAL MARITIME FLEET OPERATIONS CENTRE HAMBURG

Carnival Maritime, the Marine Operations Unit of Costa Group, provide digital support, control, and planning of all technical and nautical aspects of the 25 cruise ships of Costa Crociere, Costa Asia and AIDA with a team of 150 skilled specialists. The centre-piece of Carnival Maritime is the fleet operations centre, FOC, where visual display technology from eyevis provides reliable representation of incoming information. With the inauguration of the FOC in Hamburg Carnival Maritime possesses a state-of-the-art command centre for the real-time monitoring of different parameters of their vessels including radar and meteorological data. In addition to the movements of the vessels information such as fuel levels and water stores are shown in large format.

### Equipment used:

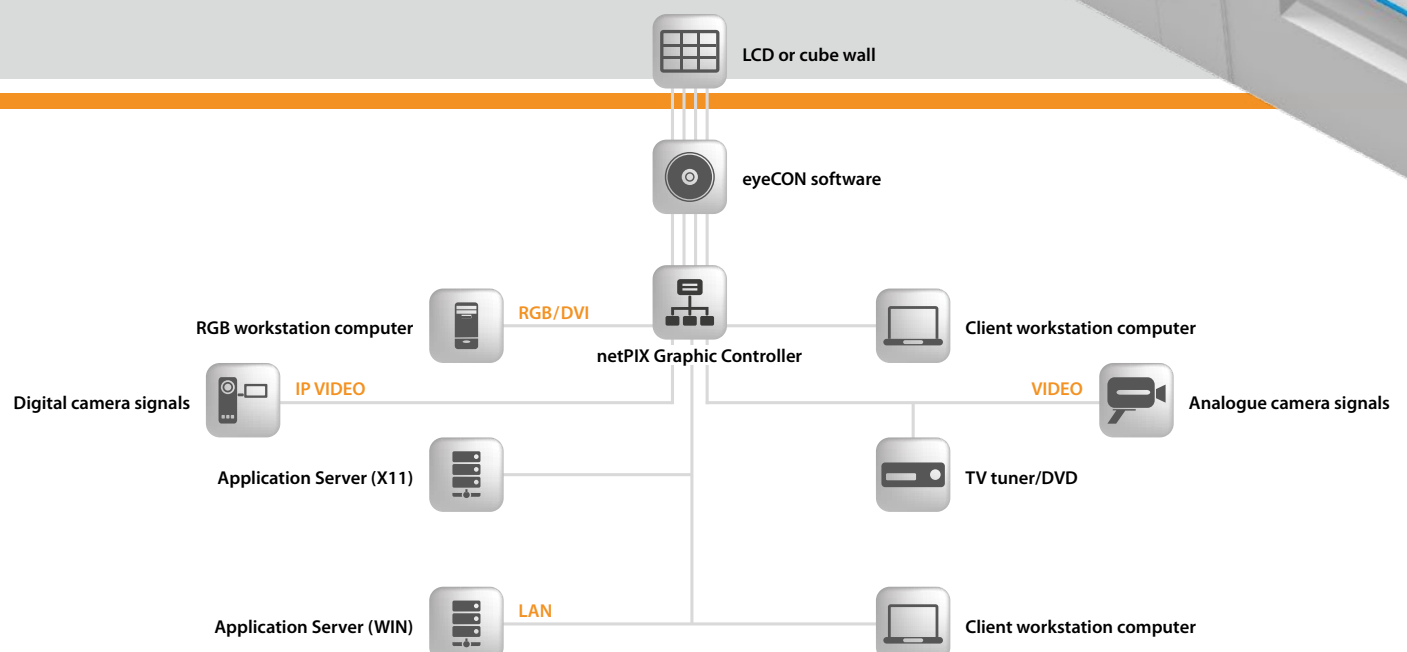
- 29× 47-inch Video Wall LCD (EYE-LCD-4700-USN-LD-FX)
- 4× 55-inch Video Wall LCD (EYE-LCD-5500-USN-LD-FX)
- 1× 85-inch 4K/UHD Touch-LCD (EYE-LCD-8500-QHD-LD-TOUCH-6IR)
- 1× netPIX Video Wall Controller with IP Decoder Boards
- 1× eyeCON Basic Wall Management Software

# SAFETY IN THE CONTROL ROOM – ROUND THE CLOCK SOUND AND EFFICIENT.

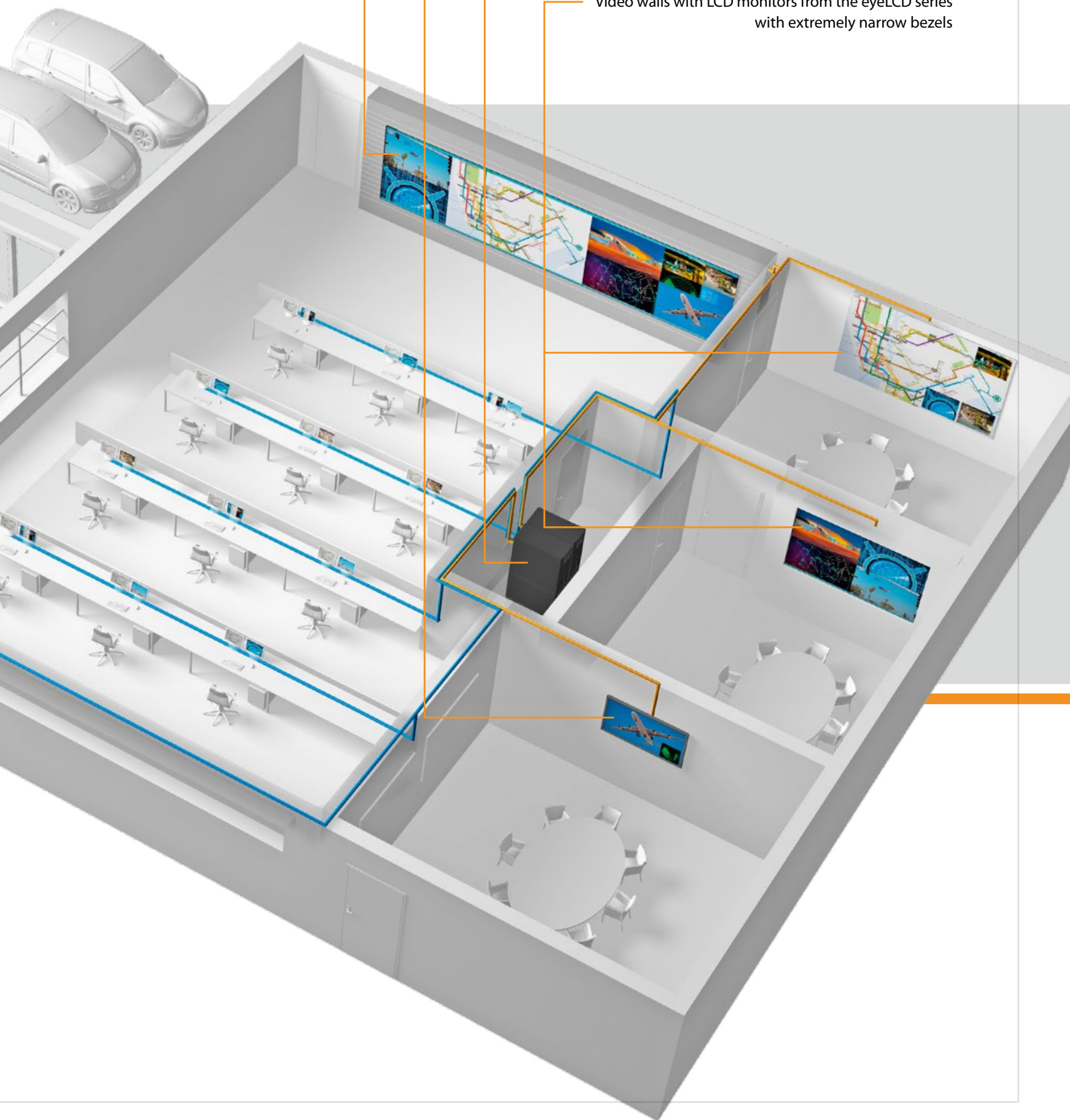
## DECISIVE ADVANTAGE THROUGH INNOVATION AND DIVERSITY

A piece of information is completely dependent on the medium which it passes. This is particularly true for visualisations in important areas such as control rooms and security centres, where a reliable display in the highest possible image quality is indispensable. After all, important and safety-relevant data are being monitored 24 hours a day, 365 days a year here and must be optimally ascertainable and continually available.

And it is precisely for this purpose that eyevis offers absolutely reliable display technology in perfect quality and at the highest level of operational security. Whether it is rear projection systems or LCD video walls – in combination with our controllers and control software, we provide exactly the solution that optimally fits to the requirements, whatever they are.







Video wall with rear projection cubes from the ecCUBE series

Single monitor from the eyeLCD series

Video wall controller from the netPIX series and  
wall management software eyeCON V5  
as well as eyevis-streaming solution

Video walls with LCD monitors from the eyeLCD series  
with extremely narrow bezels

# PERFECT INTERPLAY OF STRENGTHS

## SYSTEM COMPONENTS FOR SECURITY AND CONTROL.



### THE REAR PROJECTION CUBES FROM THE ecCUBE – SERIES

eyevis cubes, with their established DLP-technology, are first in line in terms of professional video wall systems. They are absolutely insusceptible to image burn-in, a permanent negative interference of the image quality caused by the long-term representation of static content.

In addition, DLP cubes provide the only option to realise literally seamless video walls for continuous operation in control rooms and security centres. In combination with their outstanding colour and brightness properties, this makes them the perfect choice for challenging video wall system applications.

With the ecCube-Series eyevis offers a portfolio of rear projection cubes with unparalleled variety and optional features. With a wide scope of screen diagonals ranging from 50-inch to 100-inch and resolutions from XGA, SXGA+, Full HD, WUXGA and newly added WQXGA, there is a fitting solution for every application.

With the models from the new SLIM cube series, eyevis presents the world's slimmest DLP® rear projection cubes, which enable the use of this technology in areas that did not offer sufficient space for an installation of a rear-projection cube wall in the past.

Being able to incorporate so many functions and with the possibility of adding a variety of features, the cubes are ideally suited for application areas depending on ergonomic and reliable display of a wide range of picture and data signals.



### THE LCD MONITORS FROM THE eyeLCD SERIES

High-end monitors from the professional LCD series by eyevis are best suited for the areas security and control, if the perfect display of moving content is required, such as live image signals of surveillance cameras or constantly changing parameter data. They combine high resolution and outstanding display characteristics with various input options for various signal sources.

From a classic professional Full HD single monitor to Ultra HD monitors with 4K resolution to displays with very narrow bezels for building seamless video walls – the spectrum of the eyeLCD series provides the right solution for every need. They are available in many different sizes from 46-inch to 98-inch screen diagonals and are always in compliance with the latest technological developments. Whether as a stand-alone display or combined into larger units – eyevis LCDs convince with their quality, technical know-how and longevity.





## THE CONTROLLERS OF THE netPIX SERIES

netPIX controllers of the latest eyevis generation present the ideal, individually configurable control solution for video wall systems. The controllers produce a single coherent surface over all display modules in a video wall, so that the user has a large desktop surface available on which sources and windows of all kinds may be placed and scaled freely.

eyevis netPIX controllers offer a multitude of features, which make them universally deployable. At present the series consists of three network-based graphics controllers and two IP streaming video decoders, which represent the state of the art. Our manufacturing unit uses only high-end server components, which guarantee the highest levels of performance and reliability for 24/7 operations. Redundant versions are also available to ensure fail-safe operation.



## THE STREAMING SOLUTION

eyevis streaming solutions are professional devices for the high-quality transmission and distribution of video and data signals over standard networks (TCP/IP). With the eyeGATE encoding devices any video signal can be transferred into a network stream with H.264 compression. With appropriate hardware or software decoding solutions the network streams can be decoded at any location inside the network and then be displayed on connected screens.

This solution offers important advantages compared to traditional digital or analogue connection. In addition to simplified cabling works through the use of standard network systems, also audio signals can be easily transmitted.



## VIDEO WALL MANAGEMENT SOFTWARE

With its unique level of performance, the eyeCON® control software by eyevis represents the top-end product for the control and administration of video wall systems. eyeCON is the universal and complete software solution for operating video walls, including all connected sources as well as the distribution and exchange of information in control and presentation rooms. Its highly simplified operating concept shortens response times and offers excellent performance. An intuitive user-interface as well as numerous innovative features further enhance the capabilities of the software.

With the new eyeUNIFY Software eyevis is now also presenting a professional open-source wall management solution. The modular, web-based concept of the software allows for a platform-independent operation, the usage in combination with different operating systems and a scalable amount of clients. As an open-source project, eyeUNIFY is available for free to all users and can be adapted to the client's specialist wishes by eyevis, the clients themselves or third parties such as system integrators.

With the epuWALL concept, both applications offer the possibility to integrate IP-based systems where distribution of signals and control over connected displays is managed completely network-based. Displays with built-in eyevis processing units (EPU) or external EPU devices enable arbitrarily large and flexible installations, without the requirement for a central split-controller.

## OUR PRODUCTS IN USE

) **ecCUBE®**  
EYEVIS REAR PROJECTION LINE

) **eyeLCD**  
EYEVIS LCD LINE

) **netPIX™**  
EYEVIS CONTROLLER

) **eyeCON®**  
EYEVIS SOFTWARE

) **eyeGATE**  
DVI/HDMI OVER IP

) **epuWALL**  
IP-BASED VIDEO WALLS

**eyeUNIFY**  
EYEVIS SOFTWARE

WORKING WORLDWIDE  
CUSTOMERS WHO TRUST IN EYEVIS TECHNOLOGY.

# PERFECT VISUAL SOLUTIONS



## A SMALL SELECTION OF FURTHERS CUSTOMERS WITH KNOW-HOW FROM EYEVIS

- Albanian Electric Transition Company, Network Operation Center – Tirana, Albania  
36× 55-inch Video Wall LCD (EYE-LCD-5500-XSN-LD-FX), 1× netPIX Controller (NPX-4900Plus), 1× eyeCON V5 Basic
- Autoroutes et Tunnel du Mont Blanc, Traffic Management Center – Bonneville, France  
18× 70-inch LED-lit DLP® Cubes (EC-70-LSXT+-1000), 13× 55-inch Full-HD LCD Monitor (EYE-LCD-5500-LE-V2),  
1× netPIX Controller (NPX-4900Plus), 1× eyeCON V5 Premium
- Beirut City Surveillance, CCTV Center – Beirut, Lebanon  
18× 50-inch SLIM LED-lit DLP® Cubes (EC-50-LHD-SLIM)
- eins Energie, Network Operation Center – Chemnitz, Germany  
18× 60-inch LED-lit DLP® Cubes (EC-60-LHD-1000)
- ENGIE Rugeley Coal Fire Station, Control Room – Rugeley, United Kingdom  
9× 70-inch Full-HD LCD Monitor (EYE-LCD-7000-700-LE)
- Fire Department Karlsruhe, Emergency Services Dispatching Center – Karlsruhe, Germany  
8× 70-inch LED-lit DLP® Cubes (EC-70-LHD-1000), 1× netPIX Controller (NPX-4900S), 1× eyeCON V5 Basic



- **KazTransGas, Dispatching Center – Almaty, Kazakhstan**  
24x 60-inch LED-lit DLP® Cubes (EC-60-LHD-ISE-1000), 2x netPIX Controller (NPX-4900Plus), 2x eyeCON V5 Basic
- **NATO Airborne Early Warning and Control Force, Security Control Centre – Geilenkirchen, Germany**  
12x 67-inch LED-lit DLP® Cubes (EC-67-LHD-1000), 1x netPIX Controller (NPX-4900Plus), 1x eyeCON V5 Basic
- **Olympia Odos Highway, Traffic Control Room – Athens, Greece**  
10x 60-inch LED-lit DLP® Cubes (EC-60-LHD-1000), 1x netPIX Controller (NPX-4900Plus), 1x eyeCON V5 Premium
- **Petrobras UO-BS “Innovative City of the Future” – Santos/Sao Paulo, Brazil**  
24x netPIX Controller (NPX-4900Plus), 24x eyeCON V5 Premium
- **Siemens Tianwan Nuclear Power Plant, Control Room – Tianwan, China**  
6x 80-inch LED-lit DLP® Cubes (EC-80-LSXT-1000)
- **Statens Vegvesen, Traffic Control Centre West Norway – Bergen, Norway**  
24x 70-inch LED-lit DLP® Cubes (EC-70-LHD-CP-1000), 1x netPIX Controller (NPX-4900), 2x netPIX Expansion (NPX-4900Plus Expansion), 2x IP Decoder Boards (NPX-4900-IPD32), 24x EYE-GATE-130 HDMI (H.264 Encoders), 1x eyeCON V5 Basic





#### **EYEVIS MAIN OFFICE**

- Germany – Reutlingen

#### **PRODUCTION LOCATION**

- Germany – Reutlingen

#### **EYEVIS OFFICES INTERNATIONAL**

- Germany – Reutlingen
- France – Paris/Saint-Affrique
- Great Britain – Burnley
- Italy – Rome
- South Korea – Seoul
- United Arab Emirates – Abu Dhabi

#### **DISTRIBUTION PARTNERS**

- Africa
- Australia
- China
- Europe
- Japan
- Latin America
- USA

Updated information on our projects and products with many photos as well as the possibility of communicating with other interested customers can also be found at:

- [twitter.com/eyevis](https://twitter.com/eyevis)
- [www.facebook.com/eyevis](https://www.facebook.com/eyevis)
- [www.linkedin.com/companies/eyevis](https://www.linkedin.com/companies/eyevis)



Scan the QR code and visit our website to find more detailed information on all of our products and services, download brochures and data sheets, or watch the product videos.

**) eyevis GmbH**  
Hundsschleestrass 23  
72766 Reutlingen  
Germany

Tel.: +49 (0) 71 21 - 4 33 03-0  
Fax: +49 (0) 71 21 - 4 33 03-22

Web: [www.eyevis.com](http://www.eyevis.com)  
E-Mail: [info@eyevis.de](mailto:info@eyevis.de)